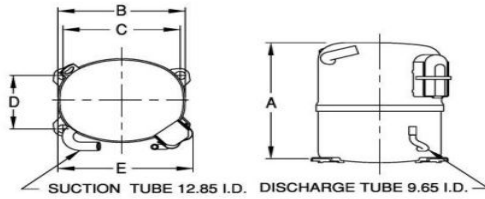




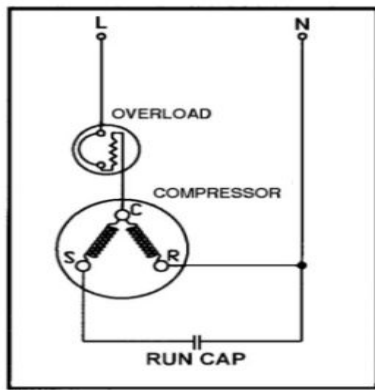
**UNCONTROLLED COPY**

**PRINCIPAL DIMENSIONS - mm**



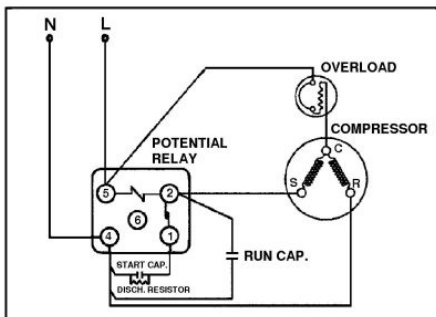
A: 264	B: 223	C: 203	D: 122	E: 239
--------	--------	--------	--------	--------

**SCHEMATIC WIRING DIAGRAM -**

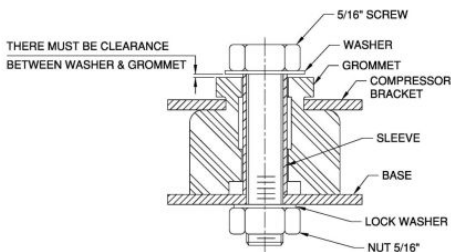


Low Torque Start

**SCHEMATIC WIRING DIAGRAM -**



**MOUNTING KIT**



Electrical : 220-240 V/50 Hz. 1 Phase

**Nominal Performance**

Capacity	3,927 / - Watts
	13,399 / - BTU/Hr
	3,377 / - Kcal/Hr
Power Input	1,550 / - Watts
Locked Rotor Amps	38.00 / - Amps
Max Continuous Current	- / - Amps
Rated Load Amps	6.88 / - Amps
COP	2.53 / - Watts / Watts
EER	8.64 / - BTU/W-Hr

**Testing Conditions**

Condensing Temperature	54.40 °C	129.9 °F
Evaporating Temperature	7.20 / - °C	45.0 / - °F
Liquid Temperature	46.10 °C	115.0 °F
Return Gas Temperature	35.00 °C	95.0 °F
Ambient Temperature	35.00 °C	95.0 °F

**Application**

Evaporating Temp. Range	HBP	@ 0.00 ° C to 13.00 ° C (32.0° F to 55.4° F)
	Heat Pump	- ° C to - ° C (-° F to -° F)
Refrigerant	R22	
Refrigerant Flow Control	Capillary Tube	
Compressor Cooling	Fan	

**Compressor and Motor data**

Compressor Type	Reciprocating
Displacement	26.75 cc.
Oil Type	Mineral Oil
Oil Charge	850.00 cc.
Motor Type	P.S.C ; 2 Pole 2,880 / - r/m
Voltage Range	198-264/- Volts 50/- Hz.

**Winding Resistance at 25 ° C**

Start	4.90 Ohms
Run	2.04 Ohms
Weight with Oil	21.66 Kg.
Weight with Oil and Accessories	22.40 Kg.

**Electrical Components**

**Motor Protector**

Type	External 3/4"
Model Number	KME 664-17/C
Open / Close	140-150 / 70-52 ° C
1st Cycle trip at 25 ° C	28.5 Amps(start) - Amps(main)

**Motor Starter**

Type	Potential Relay
Model Number	KGE 680 (GE3ARR3UX3AT2)
Pick Up (max.)	186.00-215.00 Amps
Drop Out (min.)	40.00-90.00 Amps
Terminal Cover	KGM 901-1
Start Capacitor	88-106 µF 330 VAC.
Disch Resistor for Start Cap	-
Run Capacitor	25 µF 440 VAC.

**Mounting Kit**

Rubber Grommet	KGM 905
Sleeve Grommet	KGM 903
Washer	-

Since we are constantly improving our product , the specification are subject to change without notice.

REV. DATE  
20-04-13

C / N No.  
0188/13

**Certificate Marks**

