



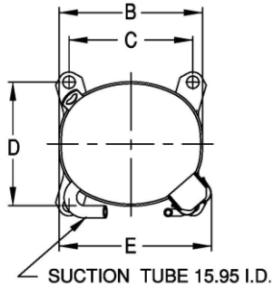
UNCONTROLLED COPY

KULTHORN KIRBY PUBLIC CO., LTD.

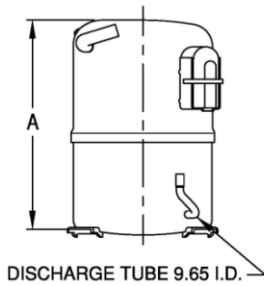
TECHNICAL SPECIFICATION

**HERMETIC
COMPRESSOR**
AW 5535E-9
BOM ID 61R-A0

PRINCIPAL DIMENSIONS - mm



A	324
B	223
C	191
D	191
E	239



ELECTRICAL : 380-420V / 50Hz., 460 V / 60 Hz. 3 Phase

Nominal Performance

Cooling Capacity :	8,353 / 10,199 Watts (28,500 / 34,800) BTU/Hr
	7,183 / 8,770 Kcal/Hr
Power Input :	3,234 / 3,925 Watts
Lock Rotor Amps :	38 / 38 Amps
Rated Load Amps :	5.6 / 5.6 Amps
COP (EER) :	2.58 / 2.60 W/W (8.81 / 8.87) BTU/W-Hr

Testing Conditions

Condensing Temperature :	54.4 °C
Evaporating Temperature :	+7.2 °C
Liquid Temperature :	46.1 °C
Return Gas Temperature :	35 °C
Ambient Temperature :	35 °C

Application

Evaporating Range	HBP, A/C :	0 °C to +13 °C
Refrigerant :		R22
Expansion device:		Capillary Tube
Compressor Cooling :		Fan

Compressor and Motor data

Compressor Type :	Reciprocating
Displacement :	59 cc.
Oil Type :	Mineral Oil
Oil Charge :	964 cc.
Motor Type :	3 PHASE ; 2 Poles 2850 / 3450 rpm
Voltage Range :	342-462 V / 50Hz. , 414-506 V / 60 Hz.
Winding Resistance at 25 °C	
L1-L2	5.20 Ohms
L1-L3	5.10 Ohms
L2-L3	5.20 Ohms

Weight with Oil :	28.66 Kg.
Weight with Oil and Accessories :	28.82 Kg.

Electrical Components

Motor Protector :

Type :	Internal Overload
Model Number :	KGE 658-1
Open / Close :	120-130 / 52-70 °C
1st Cycle trip :	27 Amps

Motor Starter (CSR Only) :

Type :	-
Model Number :	-
Pick Up :	- Volts.
Drop Out :	- Volts.
Terminal Cover :	KGM 901-2

Start Capacitor (CSR Only) :

No	μ F	No	VAC.
----	-----	----	------

Run Capacitor :

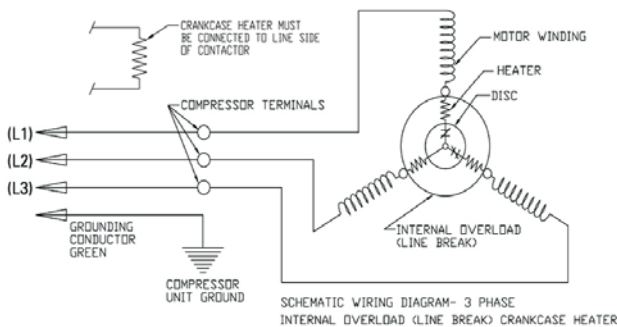
No	μ F	No	VAC.
----	-----	----	------

Mounting Kit

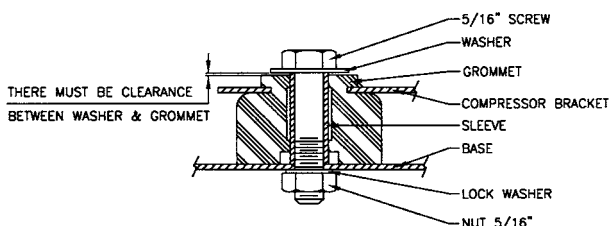
Rubber Grommet :	KGM 905
Sleeve Grommet :	KGM 903

SCHEMATIC WIRING DIAGRAM

SCHEMATIC WIRING DIAGRAM 3 PHASE



MOUNTING KIT



Since we are constantly improving our product ,
the specification are subject to change without notice.

REV. DATE

27-01-10

C / N No.

0064/10